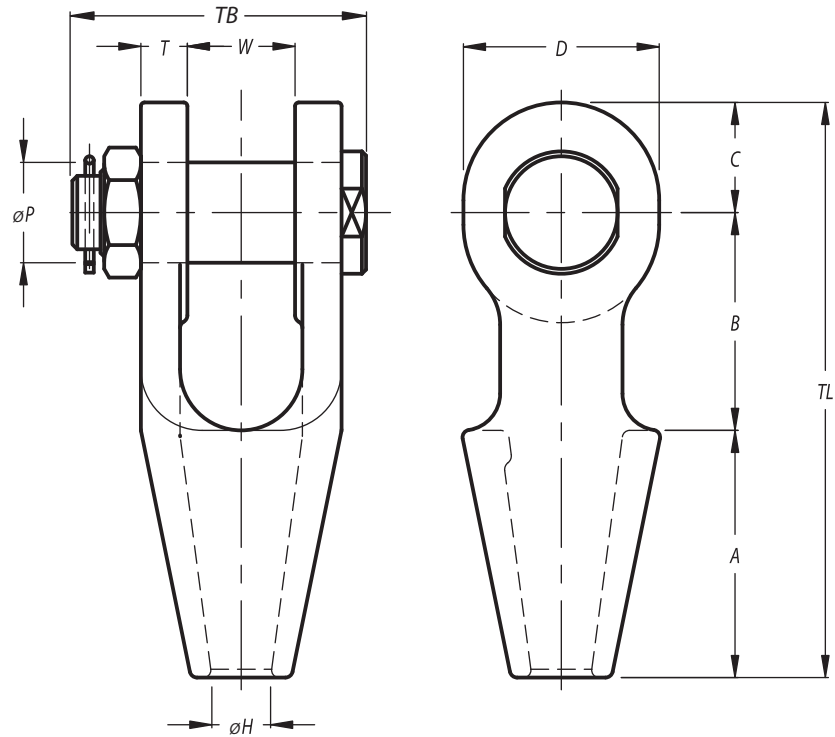


Sockets
Open Spelter Sockets with bolt


Stock No.	Model No.	MBL (tons)	for wire ø		Dimensions (mm)										Weight (kgs)
			(mm)	(inch)	A	B	C	D	øH	øP	T	TL	TB	W	
43.196.00.21	OSS 196 B	8	6 - 7	1/4	50	40	19	34	8.5	16	9	109	62	19	0.4
43.197.00.21	OSS 197 B	12	8 - 10	3/8	57	45	22	42	12	20.6	11	124	75	11	0.8
43.198.00.21	OSS 198 B	20	11 - 13	7/16 - 1/2	64	51	27	50	14	25	12	142	80	25	1
43.199.00.21	OSS 199 B	25	14 - 16	9/16 - 5/8	76	63	32	58	17.5	30	14	171	96	32	1.8
43.100.00.21	OSS 100 B	40	18 - 19	3/4	89	76	40	70	21	35	16	205	107	38	3.2
43.104.00.11	OSS 104 B	55	20 - 22	7/8	101	89	45	80	24	41	19	235	123	44	4.6
43.108.00.11	OSS 108 B	75	23 - 26	1	114	101	60	104	28	51	22	275	138	51	8
43.111.00.11	OSS 111 B	90	27 - 30	1 1/8	127	114	65	114	32	57	25	306	160	57	11
43.115.00.11	OSS 115 B	125	31 - 36	1 1/4 - 1 3/8	139	127	72	126	38	63	28	338	165	63	16
43.118.00.11	OSS 118 B	150	37 - 39	1 1/2	152	162	80	142	41	70	30	394	201	76	23
43.120.00.11	OSS 120 B	170	40 - 42	1 5/8	165	165	88	152	44	76	33	418	209	76	27
43.125.00.11	OSS 125 B	225	43 - 48	1 3/4 - 1 7/8	190	178	100	176	51	89	39	468	237	89	41
43.128.00.11	OSS 128 B	280	49 - 54	2 - 2 1/8	216	228	108	194	57	95	46	552	263	101	58
43.130.00.11	OSS 130 B	360	55 - 60	2 1/4 - 2 3/8	228	250	120	210	63	108	53	598	298	113	85
43.132.00.11	OSS 132 B	425	61 - 68	2 1/2 - 2 5/8	248	273	133	236	73	121	60	654	330	127	118
43.135.00.11	OSS 135 B	460	69 - 75	2 3/4 - 2 7/8	279	279	138	240	79	127	73	696	359	133	155
43.138.00.11	OSS 138 B	560	76 - 80	3 - 3 1/8	305	286	146	252	86	133	76	737	380	146	173
43.140.00.11	OSS 140 B	625	81 - 86	3 1/4 - 3 3/8	330	298	160	290	92	140	79	788	397	159	230
43.142.00.11	OSS 142 B	720	87 - 93	3 1/2 - 3 5/8	356	318	178	320	99	152	83	852	417	171	265
43.144.00.11	OSS 144 B	875	94 - 102	3 3/4 - 4	381	343	190	350	108	178	89	914	450	191	370
43.146.00.11	OSS 146 B	1200	108 - 115	4 1/4 - 4 1/2	450	480	215	400	125	195	100	1145	504	205	525
43.150.00.11	OSS 150 B	1300	120 - 130	4 3/4 - 5	500	500	280	560	138	250	110	1280	564	225	900

MBL = Minimum Breaking Load.

Standard all sockets are painted blue, but can be supplied galvanized (last digits 21).

All sockets can be supplied with EN 10204/DIN 50049 3.1 certificate (no additional costs).

Other than 3.1 certificates on request and at additional costs.