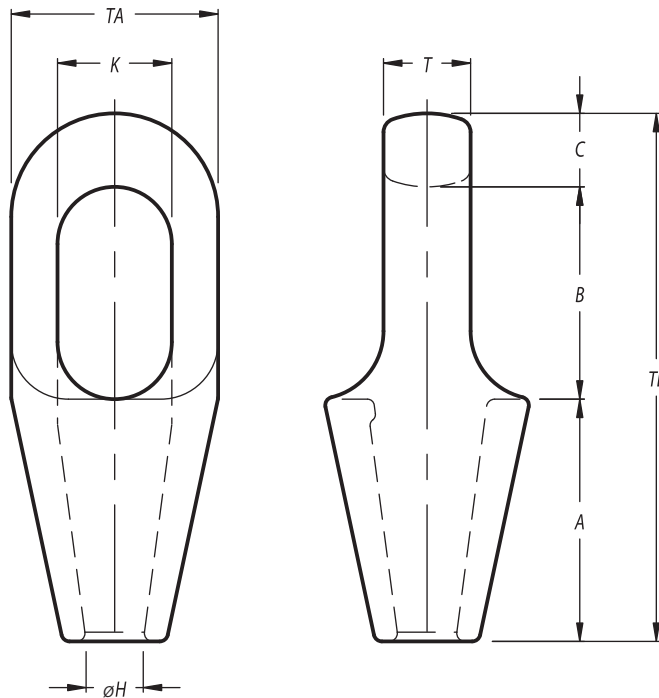


Sockets
Closed Spelter Sockets


Stock No.	Model No.	MBL (tons)	for wire ø		Dimensions (mm)								Weight (kgs)
			(mm)	(inch)	A	B	C	øH	K	T	TA	TL	
43.296.00.20	CSS 296	8	6 - 7	1/4	50	40	11	8.5	22	13	37	101	0.3
43.297.00.20	CSS 297	12	8 - 10	3/8	57	48	14	12	25	17.5	43	119	0.5
43.298.00.20	CSS 298	20	11 - 13	7/16 - 1/2	63.5	59	17.5	14	30	22.5	51	140	0.7
43.299.00.20	CSS 299	25	14 - 16	9/16 - 5/8	76	65	21	17.5	36	26	67	162	1.3
43.200.00.20	CSS 200	40	18 - 19	3/4	89	78	27	21	42	32	76	194	2.1
43.201.00.20	CSS 201	55	20 - 22	7/8	101	90	33	24	47	38	92	224	3.6
43.204.00.10	CSS 204	75	23 - 26	1	114	103	36	28	57	44	104	253	5.3
43.207.00.10	CSS 207	90	27 - 30	1 1/8	127	116	39	32	63	51	114	282	7
43.212.00.10	CSS 212	125	31 - 36	1 1/4 - 1 3/8	139	130	43	38	70	57	127	312	9.7
43.215.00.10	CSS 215	150	37 - 39	1 1/2	152	155	51	41	79	63	136	358	13
43.217.00.10	CSS 217	170	40 - 42	1 5/8	165	171	54	44	83	70	146	390	17
43.219.00.10	CSS 219	225	43 - 48	1 3/4 - 1 7/8	190	198	55	51	93	76	171	443	26
43.222.00.10	CSS 222	280	49 - 54	2 - 2 1/8	216	224	62	57	100	82	193	502	37.5
43.224.00.10	CSS 224	360	55 - 60	2 1/4 - 2 3/8	228	247	73	63	112	92	216	548	50
43.226.00.10	CSS 226	425	61 - 68	2 1/2 - 2 5/8	248	270	79	73	140	102	241	597	65
43.227.00.10	CSS 227	460	69 - 75	2 3/4 - 2 7/8	279	286	79	79	159	124	273	644	94
43.228.00.10	CSS 228	560	76 - 80	3 - 3 1/8	305	298	83	86	171	133	292	686	110
43.229.00.10	CSS 229	625	81 - 86	3 1/4 - 3 3/8	330	311	102	92	184	146	311	743	145
43.230.00.10	CSS 230	720	87 - 93	3 1/2 - 3 5/8	356	330	102	99	197	159	330	788	182
43.231.00.10	CSS 231	875	94 - 102	3 3/4 - 4	381	356	108	108	216	178	362	845	210
43.233.00.10	CSS 233	1200	108 - 115	4 1/4 - 4 1/2	450	425	125	125	235	190	405	1000	330
43.240.00.10	CSS 240	1300	120 - 130	4 3/4 - 5	500	525	125	138	260	200	450	1150	500

MBL = Minimum Breaking Load.

Standard all sockets are painted blue, but can be supplied galvanized (last digits 20).

All sockets can be supplied with EN 10204/DIN 50049 3.1 certificate (no additional costs).

Other than 3.1 certificates on request and at additional costs.